



PERFIL LED FLARO

Ficha Técnica Perfil Led Flaro



**Perfil Flaro
Lacado Branco
(Ref.: PFA13272)**



**Perfil Flaro
Anodizado
(Ref.: PFA13271)**



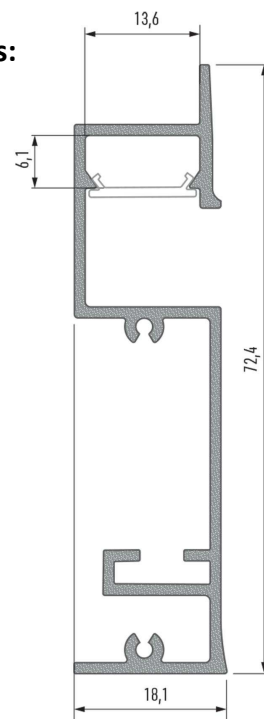
**Topos alumínio branco
(Esquerdo - Ref.: TP272E)
(Direito - Ref.: TP272D)**



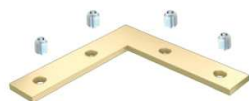
**Topos alumínio silver
(Esquerdo - Ref.: TP271E)
(Direito - Ref.: TP271D)**

- > Perfil alumínio: lacado branco / anodizado
- > Medidas: 18,1 x 72,4 x 2000mm
- > Difusores PMMA disponíveis:
Transparente / Semi-transparente / Semi-opalino /
Opalino / Lente 15° / Fosco / Preto
- > Transparência dos difusores:
 - . DF1T - 95% | . DF1LT - 92%
 - . DF1ST - 90% | . DF1SO - 78%
 - . DF1O - 51% | . DF1F - 83%
 - . DF1PT - 23,9%
- > Topos alumínio: branco / silver
- > Largura de fita led: fitas até 12mm
- > Potência máxima: 52,5W/m

Medidas:



Acessórios disponíveis:



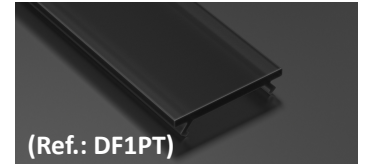
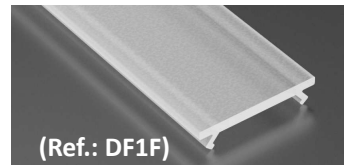
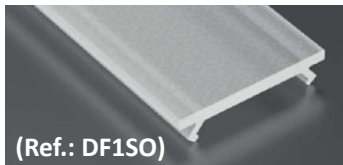
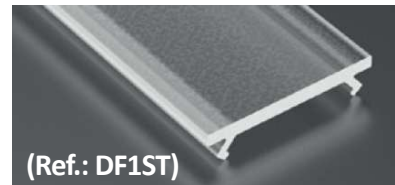
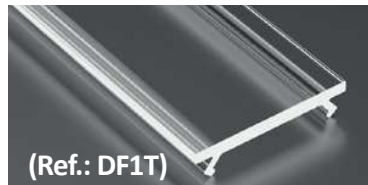
Unções de ligação

Molas para perfil

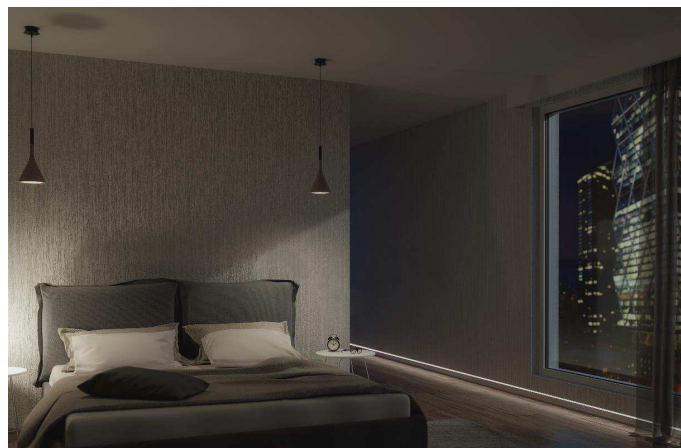
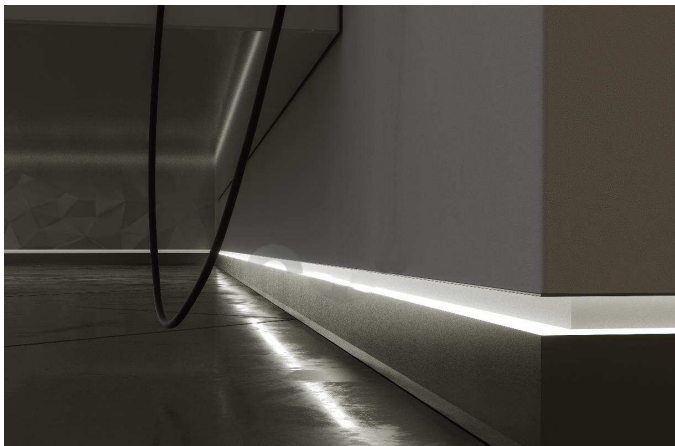


PERFIL LED FLARO

Ficha Técnica Perfil Led Flaro



Aplicação:





PERFIL LED FLARO

Ficha Técnica Perfil Led Flaro

Instalação:

