



PERFIL LED GRANADA

ENCASTRE / EMPOTRAR / RECESS

PERFIL ALUMÍNIO

Perfil de alumínio
Aluminum profile

Não Anodizado, *No anodizado,*
Non Anodized
Lacado branco, *Laca blanco,*
Lacquered White
Anodizado, *Anodizado, Anodized*
Anodizado Preto, *Anodizado Negro,*
Black Anodized

DIMENSÕES

Dimensiones / dimensions

22 x 18 x 2000 mm

DIFUSORES DISPONÍVEIS

Difusores disponibles
Covers available

Lente 15° | *Lente 15° / 15° Lens*
Transparente | *Transparente / Transparent*
Semi-Opalino | *Semi-Opal / Frozen*
Fosco | *Mate / Milky Frosted*
Opalino | *Opal / Milky*
Preto | *Negro / Black*

TRANSPARÊNCIA DOS DIFUSORES

Transparencia de difusores
Covers transparency

92% Lente 15° | *Lente 15° / 15° Lens*
95% Transparente | *Transparente / Transparent*
78% Semi-Opalino | *Semi-Opal / Frozen*
83% Fosco | *Mate / Milky Frosted*
51% Opalino | *Opal / Milky*
23,9% Preto | *Negro / Black*

LARGURA DE FITA LED

Ancho de tira led
Led strip width

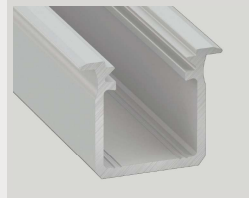
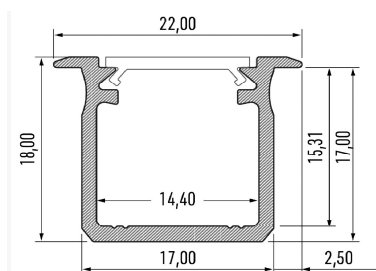
Até 12mm

POTÊNCIA MÁXIMA

Potencia máxima
Maximum power

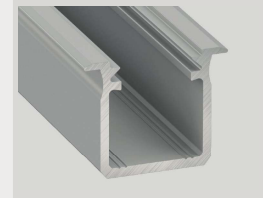
32,5W/mt

DIMENSÕES



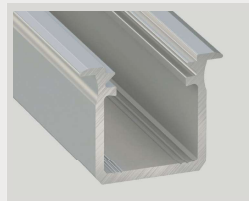
— Perfil Lacado Branco

Ref. PFA2182



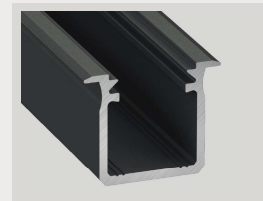
— Perfil Anodizado

Ref. PFA2181



— Perfil Não Anodizado

Ref. PFA2187



— Perfil Anodizado Preto

Ref. PFA2188



— Topo PL Branco

Ref. TP2182



— Topo PL Silver

Ref. TP2181

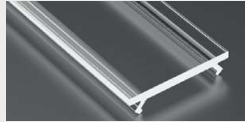


— Topo PL Preto

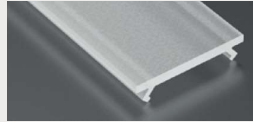
Ref. TP2188



_Difusor Lente 15°
Ref. DF1LT



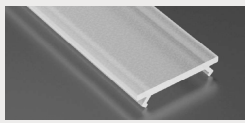
_Difusor Transparente
Ref. DF1T



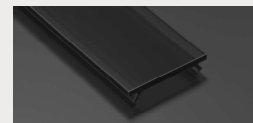
_Difusor Semi-Opalino
Ref. DF1SO



_Difusor Opalino
Ref. DF1O



_Topo PL Branco
Ref. DF1F



_Difusor Preto
Ref. DF1PT

INSTALAÇÃO | INSTALACIÓN | INSTALLATION

